

Horizontal Clamps

Load Rated

IPHTONZ



The IPHTONZ / IPHSZ horizontal lifting clamps are for use in the lifting and transfer in horizontal position of non-sagging materials or of bundles of non-sagging material. These clamps must be used in pairs or more.

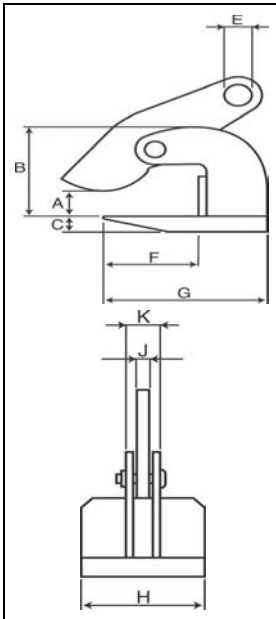
For Horizontal Lifting and Transfer

- Available in capacities of .75 thru 25 metric tons.
- Wide variety of jaw openings available: 0 to 100mm.
- Welded alloy steel body for strength and smaller size. Forged alloy components, where required.
- Individually Proof Tested to 2 times the Working Load Limit with certification.
- Company name (IP), logo, Working Load Limit and jaw opening permanently stamped on body.
- Each product is individually serialized, with the serial number and Proof Load test date stamped on body. Serial number is included on the test certificate with maintenance and warranty logbook.
- Maintenance replacement parts are available.
- Manufactured by a ISO 9001 facility.
- All sizes are RFID EQUIPPED.

IPHOZ



The IPHOZ horizontal lifting clamp is to be used for lifting and transferring, in the horizontal position, of thin sheet and other materials that will sag or bend when lifted. These clamps must be used in pairs or more.



Model IPHTONZ: Jaw opening range 0 to 60mm

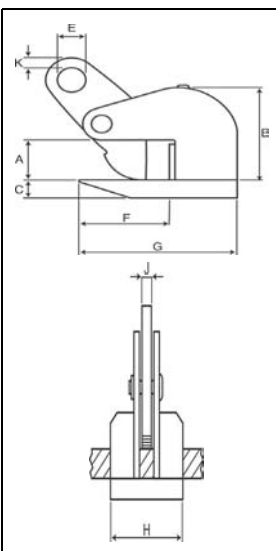
Model	Working Load Limit (Per Pair) (t)*	IPHTONZ Stock No.	Weight Each (kg.)	Dimensions (mm)								
				Jaw A	B	C	E	F	G	H	J	K
IPHTONZ	0.75	2705343	2.0	0 - 30	75	16	16	64	118	81	12	46
IPHTONZ	1.5	2705344	4.5	0 - 60	114	16	22	87	153	110	16	52
IPHTONZ	3	2705477	7.0	0 - 60	117	20	26	87	163	120	20	69
IPHTONZ	4.5	2705483	10.0	0 - 60	132	25	30	87	183	130	20	69
IPHTONZ	6	2705484	12.5	0 - 60	143	25	36	96	213	130	20	69
IPHTONZ	9	2705485	15.5	0 - 60	157	30	43	110	223	140	25	86
IPHTONZ	12	2705486	20.5	0 - 60	172	30	47	120	254	150	25	88
IPHTONZ	15	2705487	27.0	0 - 60	183	30	47	130	284	200	25	88
IPHTONZ	25	2705119	39.0	0 - 60	169	40	47	170	300	220	32	113

* Design Factor based on EN 13155 and ASME B30.20.

Model IPHSZ : Jaw opening range 0 to 100mm

Model	Working Load Limit (Per Pair) (t)*	IPHSZ Stock No.	Weight Each (kg.)	Dimensions (mm)								
				Jaw A	B	C	E	F	G	H	J	K
IPHSZ	3	2705308	11.0	0 - 100	192	20	26	160	222	140	20	65
IPHSZ	6	2705311	18.2	0 - 100	200	25	32	160	249	180	20	69
IPHSZ	9	2705313	24.6	0 - 100	220	30	35	170	270	190	25	85
IPHSZ	12	2705318	31.4	0 - 100	220	35	47	170	270	200	25	95

* Design Factor based on EN 13155 and ASME B30.20.



Model IPHOZ: Jaw opening range 0 to 60mm

Model	Working Load Limit (Per Pair) (t)*	IPHOZ Stock No.	Weight Each (kg.)	Dimensions (mm)								
				Jaw A	B	C	E	F	G	H	J	K
IPHOZ	0.75	2705401	3.0	0 - 30	94	16	16	70	118	81	12	12
IPHOZ	1.5	2705402	5.5	0 - 45	133	16	22	125	192	100	16	12
IPHOZ	3	2705403	8.0	0 - 45	137	20	26	125	200	120	20	10
IPHOZ	4.5	2705404	8.5	0 - 45	138	25	30	126	220	120	20	10
With larger jaw opening												
IPHOZ	6	2705405	15.5	0 - 60	171	30	36	135	235	130	20	20
IPHOZ	9	2705406	20.5	0 - 60	211	30	43	166	276	160	25	20
IPHOZ	12	2705407	38.0	0 - 60	217	40	47	168	294	190	25	19
IPHOZ	15	2705408	38.0	0 - 60	220	40	47	183	317	250	25	22

* Design Factor based on EN 13155 and ASME B30.20.